

SELECT®

POWER-VENT



Residential Gas Water Heaters

State Select® Power-Vent 40-gallon and 50-gallon gas water heaters now feature patented C3 Technology® design, which meets Phase II of the ANSI Z21.10.1 standards for flammable vapor ignition resistance. A power-vent water heater is an excellent alternative in many replacement applications where a conventional vertical-vent model is not a practical option and offers versatility for placement of gas water heaters in residential new construction.



Enhanced Power-Vent Capabilities

- For greater versatility than ever before, system allows combined horizontal and vertical vent runs up to 120 equivalent feet with 3" pipe, up to 160 equivalent feet with 4" pipe on 40,000 BTU and 50,000 BTU models
- 40 and 50-gallon models vent using 2", 3" or 4" Schedule 40 PVC, CPVC or ABS pipe
- Supplied with termination screens and elbow
- See next page for complete information on vent capabilities

Intelli-Vent™ Electronic Gas Control

- Silicon nitride hot surface ignitor provides superior durability and eliminates standing pilot
- Advanced circuitry ensures precise control of water temperature, provides easy to understand system diagnostics
- Gas connection located on side of control, same as conventional gas control

Diffuser Dip Tube

- Reduces lime and sediment buildup, maximizes hot water output
- Made from State PEXAN™, a cross-linked polymer that can withstand long-term exposure to temperatures up to 400°F

Patented Glass-Lined Tank with Aluminum Anode Rod

- For long-lasting protection against rust and corrosion

Advanced Power-Vent Blower Design

- Equipped with 110/120 volt electrical system (rating 3 amps or less), 6-foot cord with standard 3-prong male connector
- Patented design reduces NOx emissions up to 33%
- Complies with Southern California and Texas requirements

Durable Brass Tamper-Resistant Drain Valve

Factory-Installed Temperature & Pressure (T&P) Relief Valve

Design-Listed by Underwriters Laboratories

- Listed according to ANS Z21.10.1 or ANS Z21.10.3 standards governing storage-type water heaters
- Additional code compliance: UBC, CEC, SBCC, CABO, HUD, BOCA National codes, ASHRAE/IESNA 90.1-1999 and 2004 NAECA

Maximum Hydrostatic Working Pressure: 150 psi

C3 Technology® Gas Water Heater Design – See other side

6-Year Limited Tank and Parts Warranty

- Consult written warranty or contact State Water Heaters for complete information.

GAS-FIRED



GAS-FIRED



For Additional Technical Information,
PHONE 800-365-0024

STATE WATER HEATERS
500 Tennessee Waltz Parkway, Ashland City, TN 37015
www.statewaterheaters.com



SELECT® POWER-VENT



Residential Gas Water Heaters

| MODEL NUMBER | FIRST HOUR RATING GALLONS | ENERGY FACTOR | GALLON CAPACITY | BTU INPUT PER HOUR NATURAL | RECOVERY 90°F RISE GALLONS PER HOUR | R VALUE** | DIMENSIONS IN INCHES | | | | | | | APPROX. SHIPPING WEIGHT (LBS) |
|----------------|---------------------------|---------------|-----------------|----------------------------|-------------------------------------|-----------|----------------------|--------|--------|----|----|--------|--------------|-------------------------------|
| | | | | | | | A | B | C | D | E | F | VENT OPTIONS | |
| GS6 40 YBVIT | 69 | .65 | 40 | 40,000 | 44 | 8 | 63 | 55 | 18-1/2 | 13 | 8 | 49 | 2, 3 or 4 | 157 |
| GS6 50 YBVIT | 83 | .65 | 50 | 40,000 | 44 | 8 | 65 | 56-3/4 | 20 | 13 | 8 | 50-1/4 | 2, 3 or 4 | 177 |
| GS6 40 YBVIT 2 | 70 | .67 | 40 | 40,000 | 44 | 16 | 63 | 55 | 20-1/2 | 13 | 8 | 49 | 2, 3 or 4 | 166 |
| GS6 50 YBVIT 2 | 83 | .67 | 50 | 40,000 | 44 | 16 | 65 | 56-3/4 | 22 | 13 | 8 | 50-1/4 | 2, 3 or 4 | 186 |
| GS6 40 YRVIT | 80 | .65 | 40 | 50,000 | 53 | 16 | 63 | 55 | 20-1/2 | 13 | 8 | 49 | 2, 3 or 4 | 166 |
| GS6 50 YRVIT | 83 | .65 | 50 | 50,000 | 53 | 16 | 65 | 56-3/4 | 22 | 13 | 8 | 50-1/4 | 2, 3 or 4 | 186 |
| GS6 50 YRVIT 5 | 114 | .65 | 50 | 62,500 | 66 | 16 | 65 | 56-3/4 | 22 | 13 | 8 | 50-1/4 | 2, 3 or 4 | 186 |
| GS6 75 YRVIT* | N/A | N/A | 74 | 80,000 | 86 | 12 | 66 | 57 | 25-1/2 | 15 | 16 | 50-1/4 | 3 or 4 | 245 |

*74-gallon model is not FVIR construction

Propane Inputs: GS6 40 YBVIT, GS6 50 YBVIT, GS6 40 YBVIT 2, GS6 50 YBVIT 2: 40,000 BTU, GS6 40 YRVIT, GS6 50 YRVIT: 50,000 BTU, GS6 50 YRVIT 5: 55,000 BTU, GS6 75 YRVIT: 80,000 BTU

**R8=1", R12=1-1/2" and R16=2" foam capacity

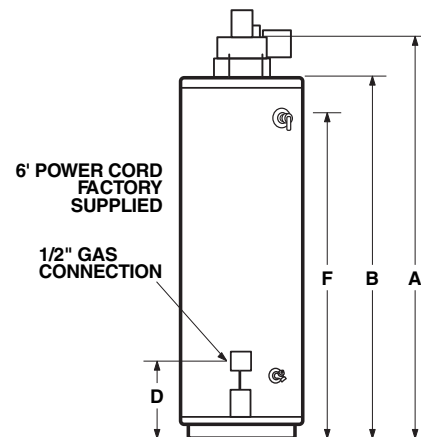
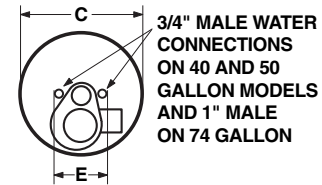
| MODEL NUMBER | BTU INPUT | MAXIMUM VENT DISTANCE (Total Equivalent Feet) | | |
|----------------|-----------|---|---------|---------|
| | | 2" Pipe | 3" Pipe | 4" Pipe |
| GS6 40 YBVIT | 40,000 | 40' | 120' | 160' |
| GS6 50 YBVIT | 40,000 | 40' | 120' | 160' |
| GS6 40 YBVIT 2 | 40,000 | 40' | 120' | 160' |
| GS6 50 YBVIT 2 | 40,000 | 40' | 120' | 160' |
| GS6 40 YRVIT | 50,000 | 40' | 120' | 160' |
| GS6 50 YRVIT | 50,000 | 40' | 120' | 160' |
| GS6 50 YRVIT 5 | 62,500 | 35' | 80' | 120' |
| GS6 75 YRVIT* | 80,000 | N/A | 30' | 100' |

40 and 50-gallon models are supplied with 2", 22-1/2" Termination Elbow, plus 2", 3" and 4" screens.

74-gallon model is supplied with 3", 90" Termination Elbow, plus 3" screen.

2" & 3" elbows are equal to 5' of vent pipe. 4" elbows are equal to 8' of vent pipe.

Important: Read and follow requirements shown in the Product Manual for Select Power-Vent gas water heaters dealing with type, placement and length of vent pipe and vent termination, as well as clearances required to provide adequate combustion and proper ventilation.

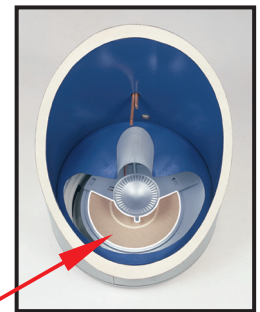


Flammable Vapor Ignition Resistant C3 Technology® Water Heaters

Corderite Combustion Containment (C3) design meets American National Standards Institute standards (ANS Z21.10.1) that deal with the accidental or unintended ignition of flammable vapors, such as those emitted by gasoline.

Covered by four U.S. patents, C3 Technology gas water heaters feature a sealed combustion chamber with air intake screen and a fireproof Corderite flame arrestor built into the water heater base. Select Power-Vent water heaters are also equipped with a flammable vapor sensor, which automatically shuts down the blower, Intelli-Vent gas control and hot surface ignitor if the presence of flammable vapors is detected.

If flammable vapors accidentally enter the combustion chamber, the Corderite flame arrestor is designed so flames burn off the top surface and cannot escape down through the arrestor.



State Industries, Inc. reserves the right to make product changes or improvements without prior notice.

For Additional Technical Information,
PHONE 800-365-0024

STATE WATER HEATERS
500 Tennessee Waltz Parkway, Ashland City, TN 37015
www.statewaterheaters.com

